

# Support for Creativity in Every Community

*Tuesday, June 3, 2:00 EDT / 11:00 PDT*

*Session 6 of the 10-part 2014 Web Conference Series*

<http://www.giarts.org/web-conference/2014/support-for-creativity-in-every-community>

Presented by:

Jill Paulsen, Deputy Director, Cuyahoga Arts & Culture

Tom DeCaigny, Director of Cultural Affairs, San Francisco Arts Commission

Roberto Bedoya, Executive Director, Tucson Pima Arts Council



**Grantmakers in the Arts**

Supporting a Creative America

4055 21st Ave W, Suite 100  
Seattle, WA 98199-1247



# Supporting Resident-Led Arts & Culture

Grantmakers in the Arts – June 3, 2014

Jill M. Paulsen  
deputy director  
Cuyahoga Arts & Culture



© Positively Cleveland / Cody York

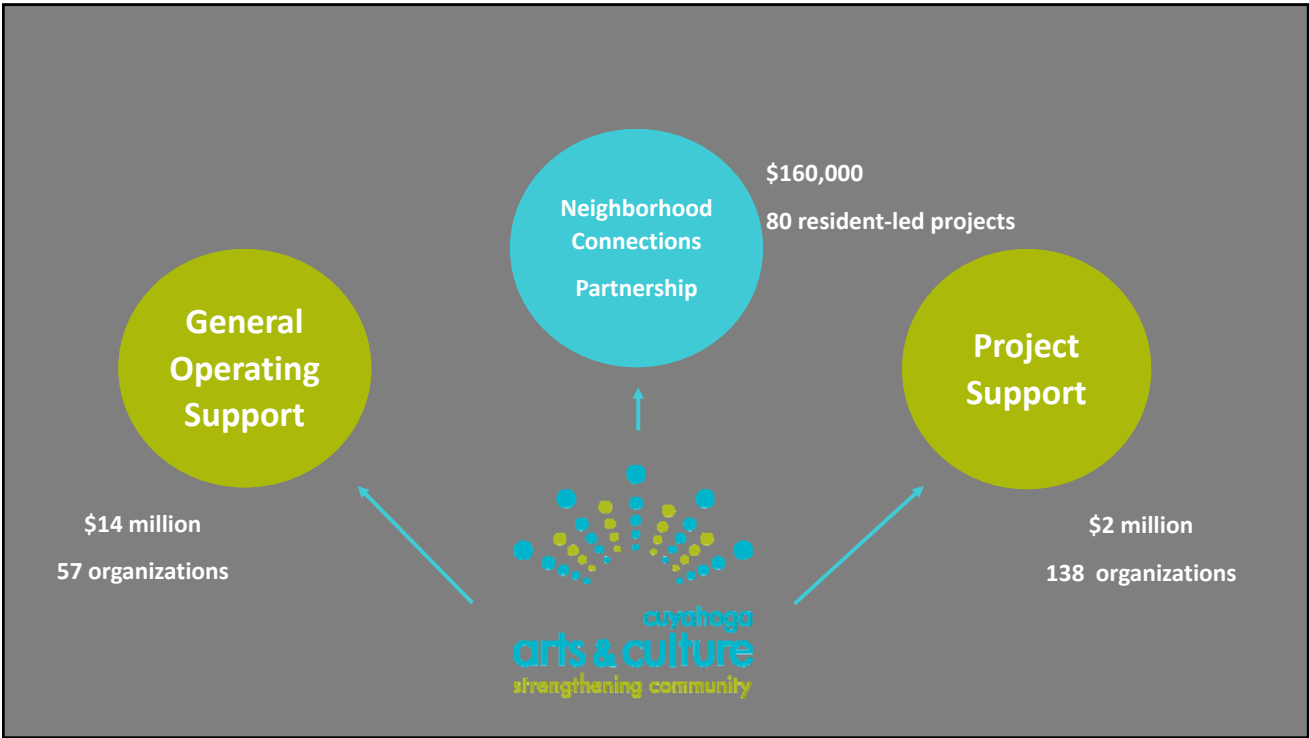


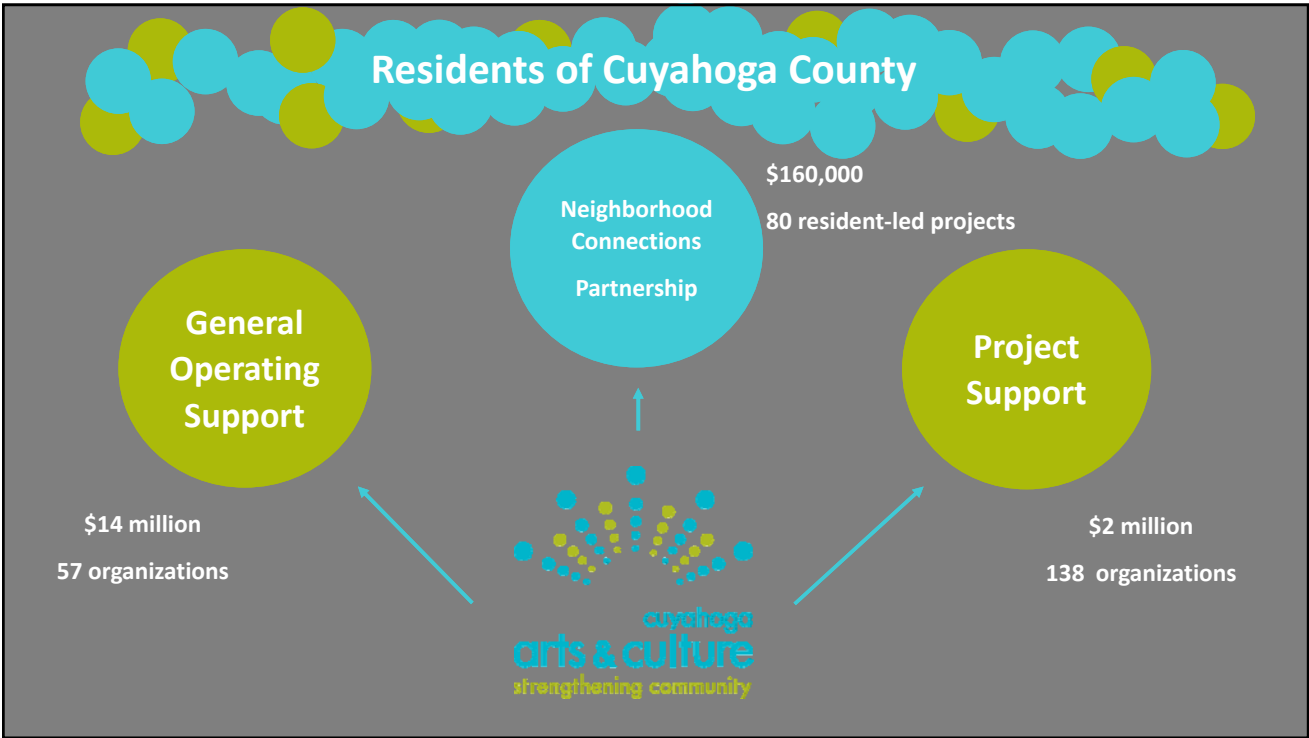


**General  
Operating  
Support**

\$14 million  
57 organizations







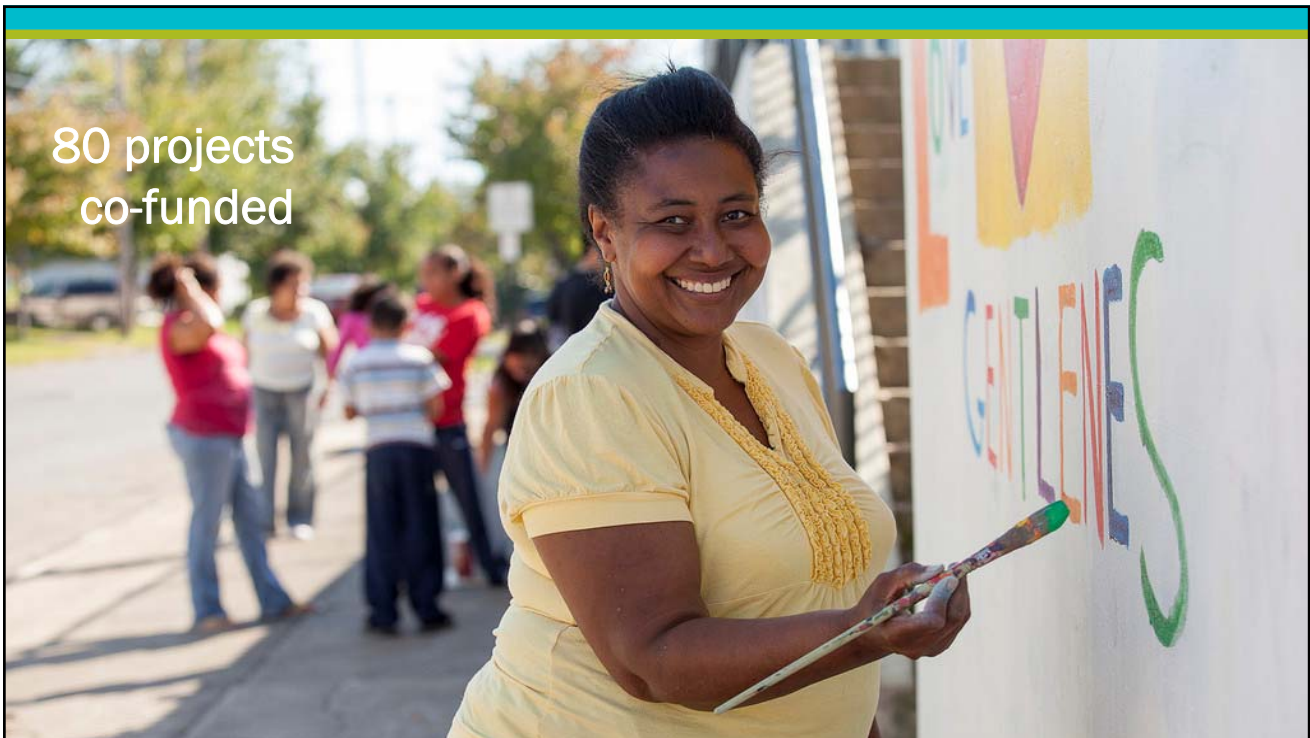




So what's happening?



80 projects  
co-funded

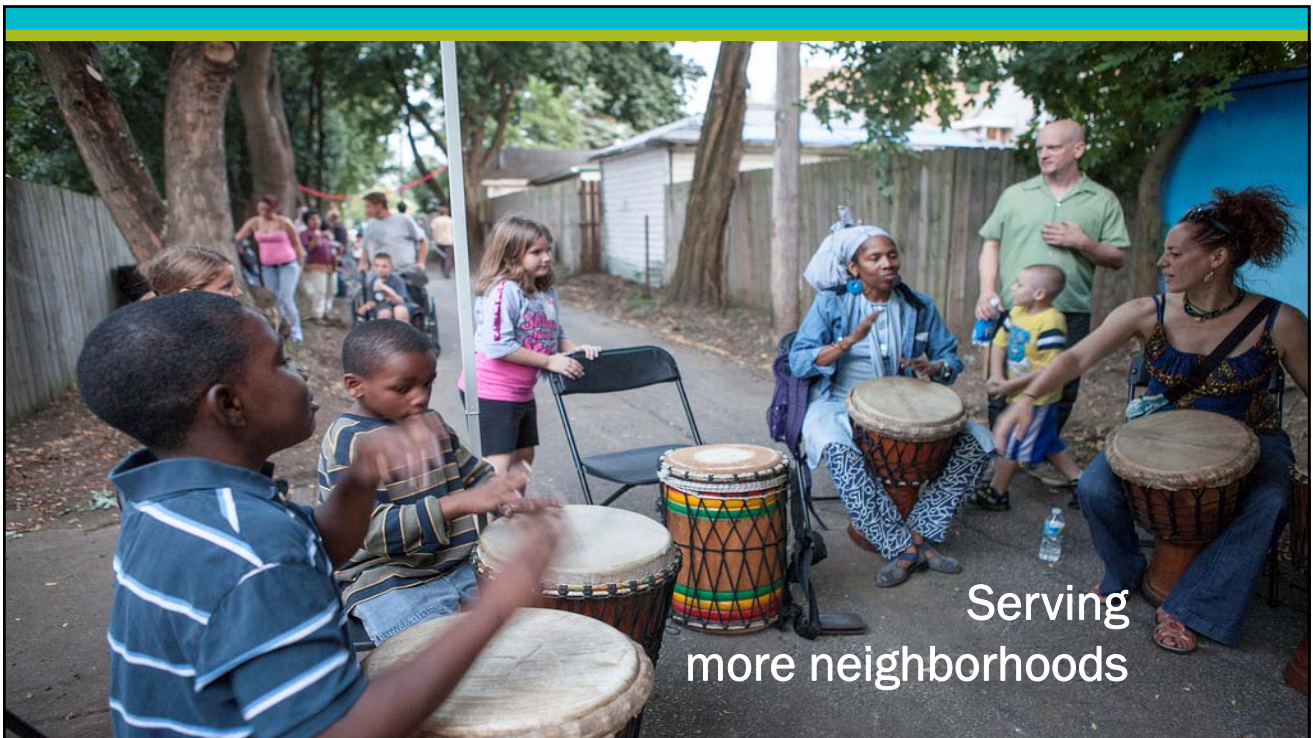




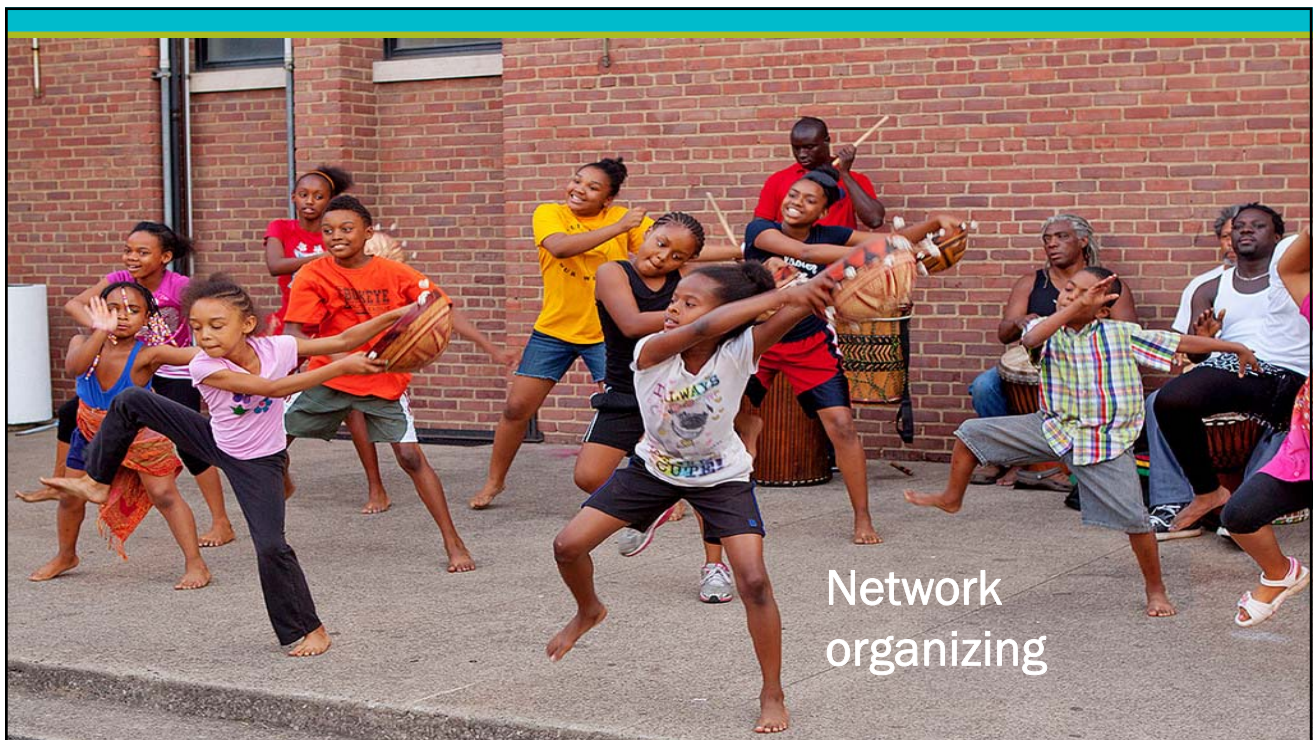
More funding for  
arts & culture



Serving  
more neighborhoods





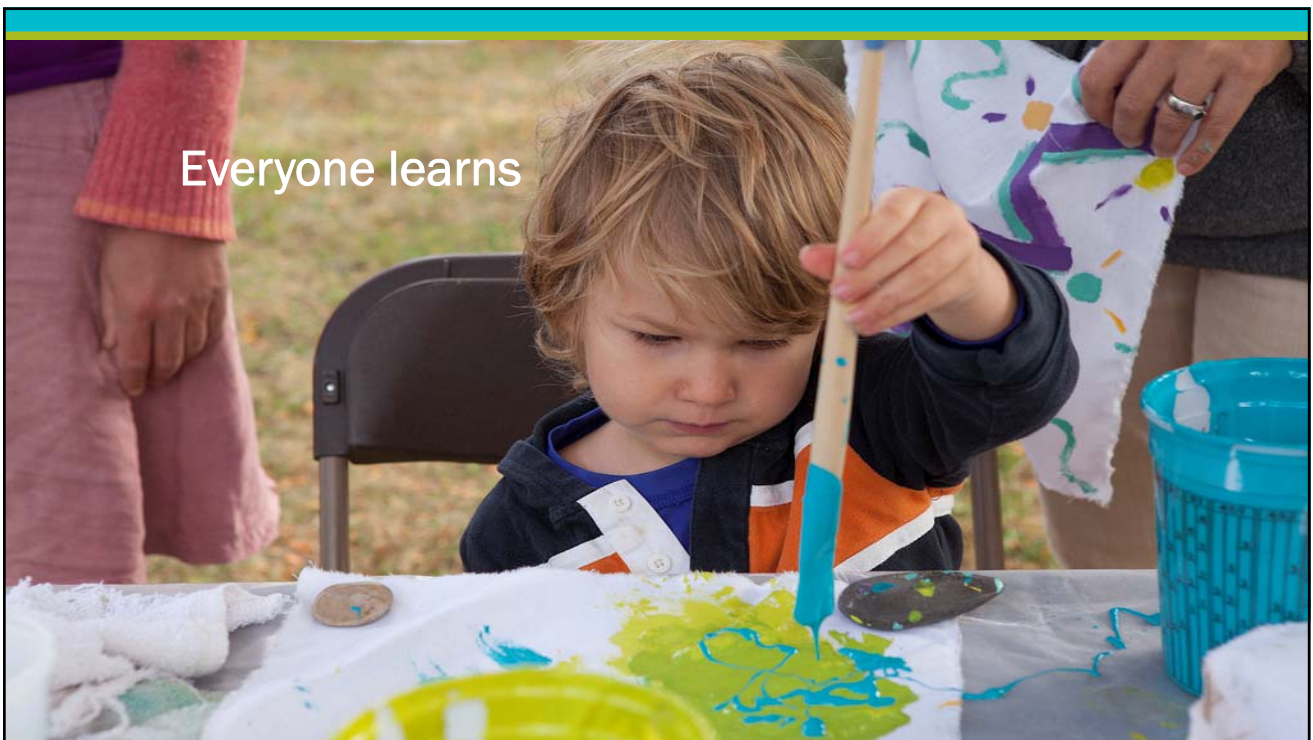




Create 'easy-on-ramps' to civic participation



Everyone learns



What could my agency or foundation  
achieve by doing this?

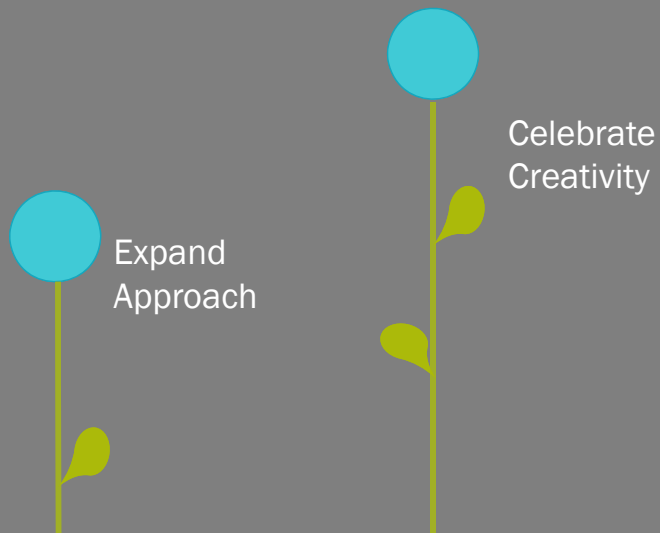


Expand  
Approach

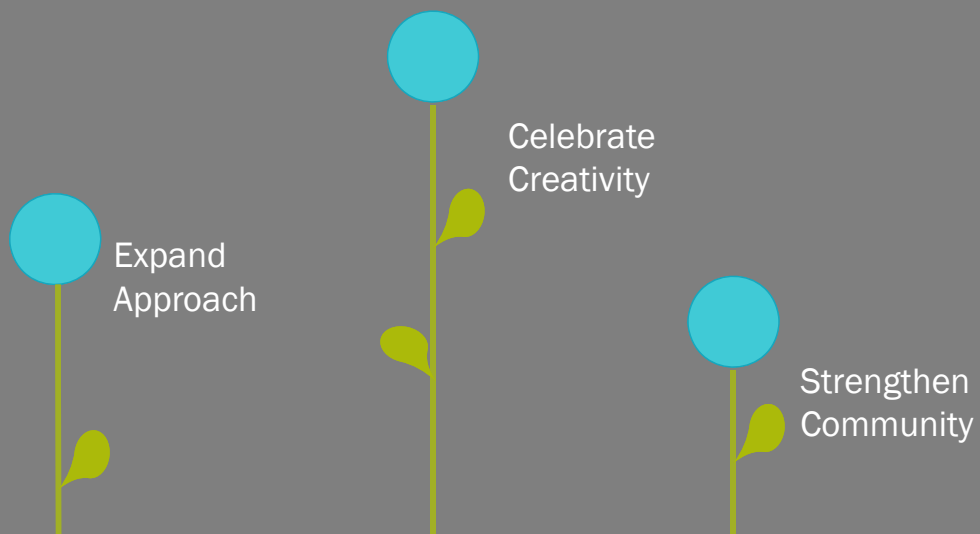
Benefits of Supporting Resident-Led Work







Benefits of Supporting Resident-Led Work



Benefits of Supporting Resident-Led Work



thank you!

Jill M. Paulsen  
Deputy Director  
Cuyahoga Arts & Culture  
[jpaulsen@cacgrants.org](mailto:jpaulsen@cacgrants.org)

[cacgrants.org](http://cacgrants.org)



## MISSION

The San Francisco Arts Commission is the City agency that champions the arts as essential to daily life by investing in a vibrant arts community, enlivening the urban environment and shaping innovative cultural policy.



## Organizational Values

- Cultural equity and access to high quality arts experience for all
- The arts as a vehicle for positive social change and prosperity
- Artists as integral to making San Francisco a city where people want to live, work and play
- The arts as critical to a healthy democracy and innovative government
- Responsiveness to community needs
- Collaboration and partnerships
- Accountability and data-driven decision-making



## Organizational Goals

1. Invest in a Vibrant Arts Community
2. Enliven the Urban Environment
3. Shape Innovative Cultural Policy
4. Build Public Awareness of the Value and Benefits of the Arts
5. Improve Operations to Better Serve the San Francisco Ecosystem



## Community Investments

- Committed to supporting and building cultural equity by providing resources and capacity building for San Francisco's diverse arts communities.
- Stewards the Cultural Equity Endowment Fund, the neighborhood Cultural Centers Fund and other City resources to foster the values and increase the impact of cultural equity and neighborhood arts.
- Supports San Francisco artists, arts organizations, arts educators and historically under-served communities through grants, technical assistance and capacity building.



## Cultural Equity Endowment: History

- Created through community advocacy – Cultural Equity Endowment Fund legislation approved in 1993
- The mission is to provide support for the enrichment of San Francisco's multicultural landscape
- Special Fund for Cultural Equity Endowment
  - FY13-14 - \$190,800 increase to the Cultural Equity Endowment (10%)
- Strong sense of community ownership continues today



## Cultural Equity Endowment: Legislative Mandates

- Majority of funds to entities deeply rooted in and able to express the experiences of historically underserved communities.
- Funded programs should be publicly accessible.
- SFAC determines annual allocation of funds among four main grant programs.



\*\*In FY2013-14, Cultural Equity ran nine separate public panels, engaging 42 peer review panelists representing a diversity of demographics, disciplines and expertise of promising practices for individual artists and small to mid-sized arts organizations.

## Cultural Equity Endowment: Legislated Grant Categories

- **Cultural Equity Initiatives - Levels 1 & 2**

- Infrastructure & Capacity Building

- **Commissions to Individual Artists**

- Generation of New Work

- **Project Grants to Small and Mid-Sized Organizations** (aka Organization Project Grants)

- Creation & Presentation of New Work

- **Facilities Fund** (aka Creative Spaces)

## Community Investments: Additional Grant Categories



- **Arts & Communities: Innovative Partnerships**

- Artists leading partnerships to build stronger communities & neighborhoods

- **Native American Arts & Cultural Traditions**

- Supporting Native American artistic exploration and growth, systems of support, and bringing audiences together with artists

- **Arts for Neighborhood Vitality**

- Festivals where art & culture are main components in strengthening neighborhood ties



## Community Investments: Addressing Affordability

- **\$2 million in one-time funding to address non-profit arts displacement**
  - Funds to be granted to intermediary in summer 2014
  - Technical assistance and direct financial assistance to small and mid-size budget organizations



## Community Investments: Next steps

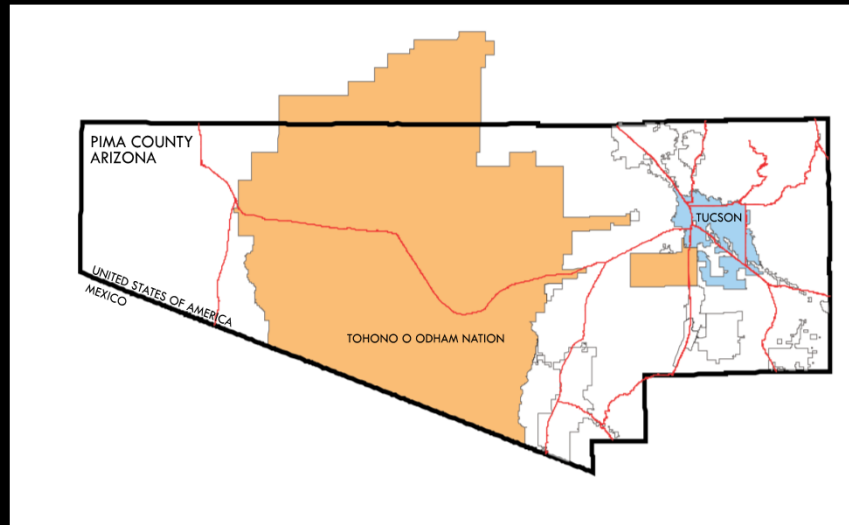
- Impact assessment, environmental scan and community engagement process (12 months)
- Review of grantmaking and capacity-building strategy:
  - Consideration of multi-year, general operating support for anchor institutions advancing cultural equity
  - Accessibility of application process
  - Financial literacy
  - Leadership development
  - Capitalization



**Contact:**

Tom DeCaigny  
[tom.decaigny@sfgov.org](mailto:tom.decaigny@sfgov.org)  
415-252-2592  
sfartscommission.org

# Pima County





## PLACE Project Grant

- The PLACE Initiative Grant is designed to leverage and enhance resources and talent to implement arts based civic engagement projects, which deal with issues of cross-cultural understanding, tolerance and or civil society in Tucson and Pima County.

## Belonging



# NO ROSTERS IN THE DESERT: Borderlands

Theaters



## Bus Stop Dreaming



# ALL SOULS PROCESSION:

MMOS: Many Mouths One Stomach



## FINDING VOICE





## The Owl and Panther Project



## Folklife Field School







## Beyond Groceries



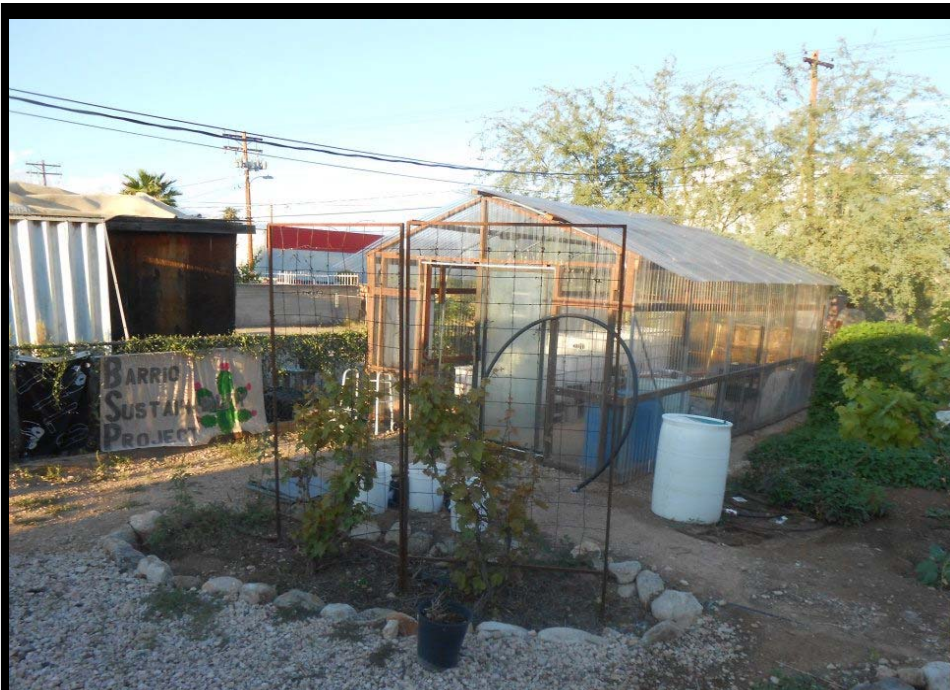


## Tucson Arts Brigade

**"INSIDE THE OVERPASS"**  
PHASE ONE  
29th Street + Columbus Blvd.

The image displays a photograph of a pedestrian overpass at the intersection of 29th Street and Columbus Blvd. The overpass is a modern structure with a glass railing. Below the overpass, there are four small diagrams labeled A, B, C, and D, which show the layout of the art installation panels. The diagrams are arranged in a 2x2 grid. The central photograph has several colored markers (A, B, C, D) placed on it to indicate the locations of the art panels. The markers are: A (top left), B (top right), C (bottom left), and D (bottom right). The diagrams show the panels are arranged in a grid pattern, with panel A at the top left, B at the top right, C at the bottom left, and D at the bottom right. The diagrams also show the dimensions of the panels and the spacing between them.

## Tierra Y Libertad Organization





## FLOW:New ARTiculations Dance Theatre



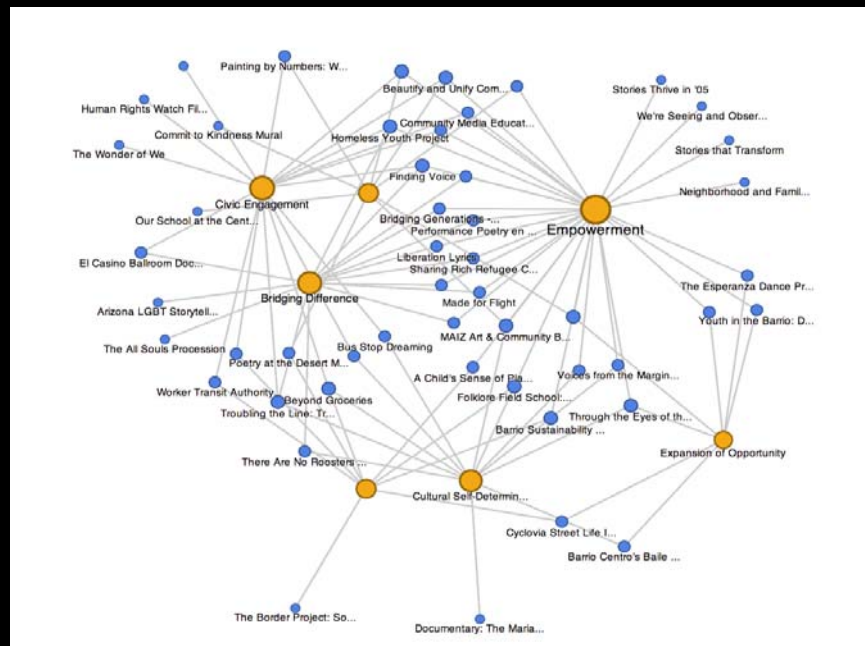
Bill Mackey: Worker Transit Authority.



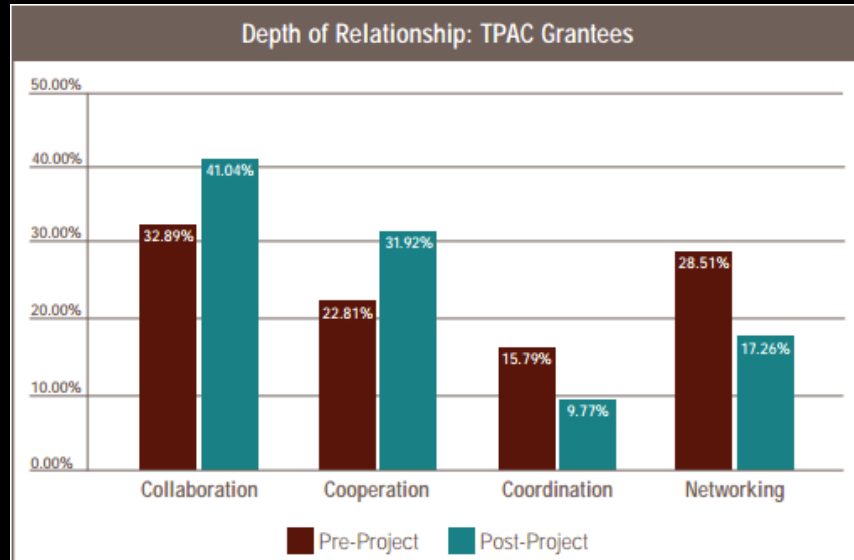


# Communities: How PLACE Influences Places


- Individual and or/Collective Empowerment
- Civic Engagement
- Stewardship of Place
- Cultural Self-Determination and Affirmation
- Bridging Difference
- Aesthetic Accomplishment
- Community Health and Well-Being



# Community Cultural Development



[www.tpacplacecommons.org](http://www.tpacplacecommons.org)




PLACE  
People, Land, Art, Culture and Engagement

TUCSON PIMA  
ARTS  
COUNCIL

An Initiative of the Tucson Pima Arts Council

[Home](#) [About](#) [Research and Evaluation](#) [Voices](#) [Projects](#) [Events](#)



**Cultural Self-Determination and Affirmation**  
Tucson Chinese Cultural CenterPLACE III [...]

**Welcome to PLACE Commons**

**PLACE Initiative**  
The People, Land, Art, Culture and Engagement (PLACE) Initiative is a program of the Tucson Pima Arts Council (TPAC). PLACE Commons has been designed to share PLACE evaluative research, PLACE projects and PLACE artists with the public at large. PLACE is supported by the Kresge Foundation, Nathan Cummings Foundation, the Open Society Foundation, the City of Tucson and the Pima County Department of Economic Development and Tourism.

[www.TucsonPimaArtsCouncil.org/PLACE](http://www.TucsonPimaArtsCouncil.org/PLACE)



[www.tucsonpimaartscouncil.org](http://www.tucsonpimaartscouncil.org)

